



Now you are able to develop your own telematic and M2M applications. Use your own skill in C, reuse existing software together with a lot of included powerful modules.

Application Development Kit for MTU-5i and MTU-5

Product Snapshot

- An MTU-5i with antenna and serial cable
- C-Compiler
- Software libraries with full API-documentation
- A rich set of application examples

Application Development Kit for MTU-5i

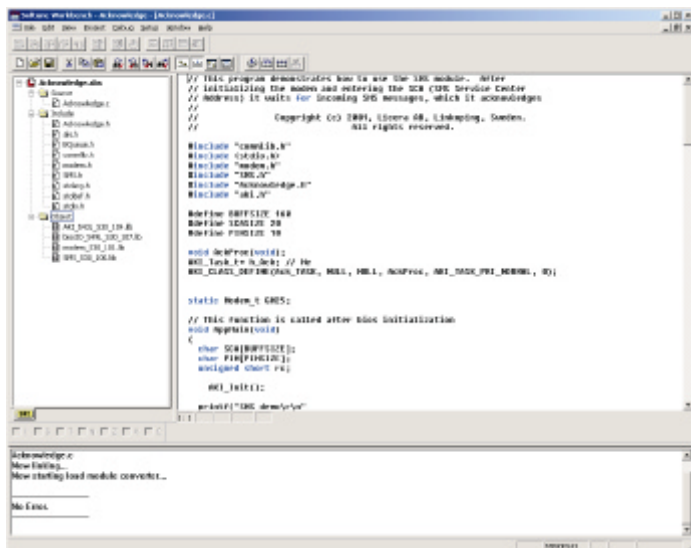
Providing a technically advanced platform for the mobile telematic and M2M community, Licera now offering a powerful application development kit. The development kit is designed for end users, third-party software developers and service providers. The ADK consists of a development suit including a graphical C-Compiler (IDE), full API-documentation, code examples and much more.

Software platform

The software solution is designed in layered structure which makes it easy to add new software modules. The generic software libraries together with the special M2M-utility library helps the developer focusing on the target application. Communicating using SMS, CSD, serial ports (RS-232 and RS-485) or logging information is made very easy. The process oriented operating system enables multi-threaded software designs which, together with the memory manager, creates a future proof environment. Storing persistent data is handled using the embedded file system (EFS) which of course has automatic crash-recovery. Licera will continue to update the software library with new features and functionality to provide you with the best mobile telematic platform on the market.

If you're a third-party software developer, solution provider, service provider or end user you can now take full advantage of our mobile telematic platforms. Software is developed using ANSI-C in a full featured IDE (Integrated Development Environment). The resulting firmware are then easily downloaded with a serial cable connected between your PC and the MTU.

The IDE gives the developer full control of the sourcecode.



```

Example: Set up a datacall
Modem_t *pModem;
Port_t *pPort;

//Use the GSM serial line as modemport
pPort = PORT_GSM;

Modem_Init( pModem, pPort, GM25, "1432");

if( Modem_CallData( pModem, "+4613363920" ) !=
    MODEM_ERROR_NONE ) {
    printf("Modem not ready!\r\n");
}
  
```

```

Example: Send an SMS

SMS_t* pSMS;
unsigned short id;
char* recipient="+46707573920";
char* SCA="+46707990001";

//The SMS will be sent without retry
//and given normal priority in queue
pSMS = SMS_CreateMessage( recipient, SCA, msg,
    SMS_CODING_7BIT, 1, 0);

id = SMS_Send( pSMS );
  
```

Software modules

OS

- Multi-threaded
- Process priorities and messages
- Dynamic memory manager

SMS

- Intelligent queuing with automatic retransmission
- Handles both 7 and 8 bit encoding
- Presents originating phone number

Modem

- Automatic dial-up service
- Hangup detection
- CLIP (Calling Line Identification Presentation)
- Voice and data calls (V.24 and V.110)

EFS (*Embedded File System*)

- Persistent data storage
- Automatic crash recovery
- ANSI-C syntax

Comm (*Serial communication*)

- Encapsulates all streaming channels
- Easy configuration

DIO (*Digital Inputs and Outputs*)

- Programmable interrupts
- Detection of overloaded and shortcircuited outputs
- Open load monitoring

RTC (*Real-Time Clock*)

- Presents time and date
- ANSI-C syntax

Deliverables

This product ships with:

- MTU-5i
- 18-pin socket
- GSM antenna
- Serial cable
- CD with compiler, documentation and software libraries

Order Number

5100 00000 0 6 (ADK for MTU-5i)

Related products

ADK for MTU-5g,
MTU-5,
MTU-5i,
MTU-5g

DISTRIBUTORS NEAR YOU

licera

Licera AB
Teknikringen 1C
SE-583 30 LINKÖPING
Sweden
Phone +46 13 - 36 39 20
Fax +46 13 - 36 39 21
info@licera.com
www.licera.com